

STYLEA

5925UJI065L51 DOM27 ALU

EAN 4031582335880

Swivel castor with wheel brake, housing made of Polyamide, with blind hole fitting. Wheel centre made of Polyamide, Tread: TENTEprene (thermoplastic rubber). Plain bearing



BETTER MOBILITY. BETTER LIFE.

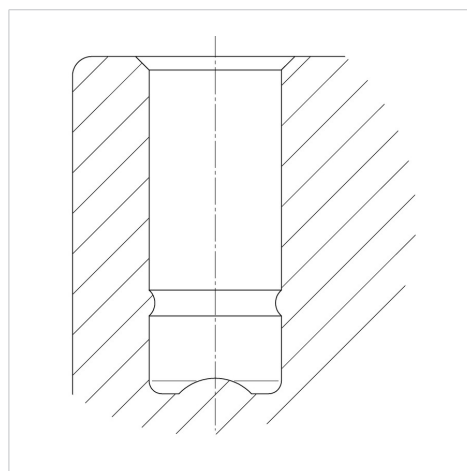


Picture may differ from original product

Technical Data

| | |
|------------------------|----------------|
| Wheel diameter | 65 mm |
| Wheel width | 8 mm |
| Castor width | 43 mm |
| Centre hole | 10 mm |
| Dome-Ø | 27 mm |
| Offset | 25 mm |
| Swivel Interference | 154 mm |
| Overall height | 68 mm |
| Temperature | - 20 / + 60 °C |
| Standard | EN_12528 |
| Weight | 0.107 kg |
| Swivel Radius | 77 mm |
| Hardness of tread | Shore A 87 |
| Load capacity | 50 kg |
| Load capacity (static) | 100 kg |

Structure & Mounting



Advantages at a glance

| | |
|----------------------|-----------|
| Roll performance | ● ● ● ○ ○ |
| Movement noise | ● ● ● ○ ○ |
| Attrition | ● ● ● ○ ○ |
| Corrosion resistance | ● ● ● ● ○ |