

# LUMINA

AA20YOIO50L51-8

EAN 4031582341126

Swivel castor, housing made of Polypropylene, with blind hole fitting.  
Wheel centre made of Polypropylene, plain bearing, electric conductive



BETTER MOBILITY. BETTER LIFE.

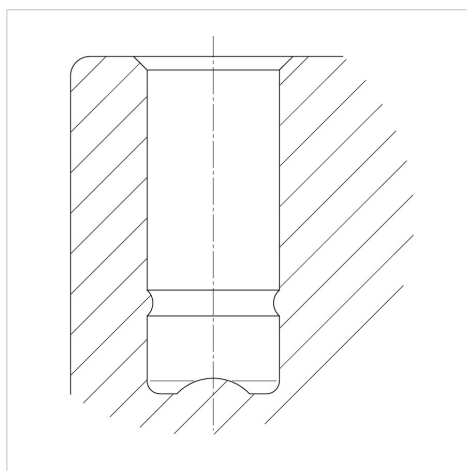


Picture may differ from original product

## Technical Data

|                        |                |
|------------------------|----------------|
| Wheel diameter         | 50 mm          |
| Wheel width            | 7 mm           |
| Castor width           | 55 mm          |
| Centre hole            | 8 mm           |
| Offset                 | 20 mm          |
| Swivel Interference    | 104 mm         |
| Overall height         | 56 mm          |
| Temperature            | - 20 / + 60 °C |
| Standard               | EN_12528       |
| Weight                 | 0.08 kg        |
| Swivel Radius          | 52 mm          |
| Hardness of tread      | Shore D 65     |
| Load capacity          | 40 kg          |
| Load capacity (static) | 80 kg          |

## Structure & Mounting



## Advantages at a glance

|                      |           |
|----------------------|-----------|
| Roll performance     | ● ● ● ○ ○ |
| Movement noise       | ● ● ● ○ ○ |
| Attrition            | ● ● ● ○ ○ |
| Corrosion resistance | ● ● ● ○ ○ |