

LINEA**5941UAP100R05-22 RAL9002**

EAN 4031582368734

Swivel castor with directional lock, housing made of Polyamide, precision ball bearing in swivel head, solid plug fitting. Wheel centre made of Polyamide, Tread: Polyurethane, precision ball bearing

TENTE

BETTER MOBILITY. BETTER LIFE.



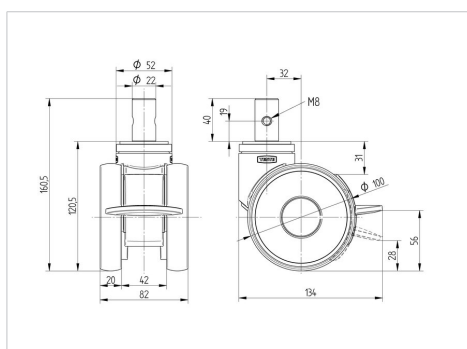
Picture may differ from original product

Technical Data

| | |
|------------------------|----------------|
| Wheel diameter | 100 mm |
| Wheel width | 20 mm |
| Castor width | 82 mm |
| Bolt-Ø | 22 mm |
| Bolt length | 40 mm |
| Dome-Ø | 52 mm |
| Offset | 32 mm |
| Swivel Interference | 216 mm |
| Overall height | 120 mm |
| Temperature | - 10 / + 40 °C |
| Standard | EN_12530 |
| Weight | 0.922 kg |
| Swivel Radius | 108 mm |
| Hardness of tread | Shore A 92 |
| Load capacity | 120 kg |
| Load capacity (static) | 240 kg |

Advantages at a glance

| | |
|----------------------|-----------|
| Roll performance | ● ● ● ● ● |
| Movement noise | ● ● ● ○ ○ |
| Attrition | ● ● ● ● ○ |
| Corrosion resistance | ● ● ● ● ○ |

Dimensions**Structure & Mounting**