

# E-DRIVE ULTIMATE

## EDMZ310 3m

EAN 4031582488227

E-Drive ultimate hand control unit, set 24V. Emergency stop category 0, set consisting of two ergonomically designed handles.



BETTER MOBILITY. BETTER LIFE.



Picture may differ from original product

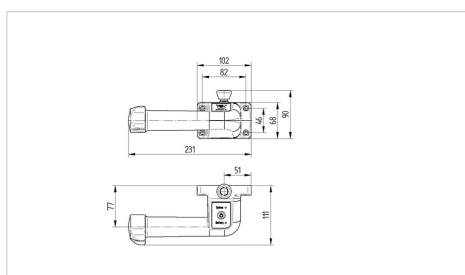
### Technical Data

Fitting options	for tube fitting from 27 – 35mm, for fitting on flat surfaces
Handle material	glass-fibre reinforced PA
Handle dimensions	see drawing
Cable length	3.0 m including plug
Speed control	continuous variable, forwards and backwards
Driving switch	safety-tested in accordance with DIN ISO 13849
Service life of travel switch	2 mil. Cycles
Controller axle rotation angle	+/- 40°
Positions of thumb depression on controller	adjustable in 22.5° steps
Permitted environmental conditions	operating temperature 5 to 50° C (recommend 15 to 50° C) , atmospheric humidity 90%, non-condensing
Protection class	IP X4 (splash water from all sides, all plugs connected)
Permissible operating temperature	operating temperature 5 to 50° C (recommend 15 to 50° C) , atmospheric humidity 90%, non-condensing
Permitted storage temperatures	- 20 to 45° C

### Advantages at a glance

Roll performance	○ ○ ○ ○ ○
Movement noise	○ ○ ○ ○ ○
Attrition	○ ○ ○ ○ ○
Corrosion resistance	○ ○ ○ ○ ○

### Dimensions



### Structure & Mounting

