

LINEA

5941UAP150P50 Ra17001

EAN 4031582411638

Swivel castor with directional lock, housing made of Polyamide, precision ball bearing in swivel head, plate fitting. Wheel centre made of Polyamide, Tread: Polyurethane, precision ball bearing



BETTER MOBILITY. BETTER LIFE.



Picture may differ from original product

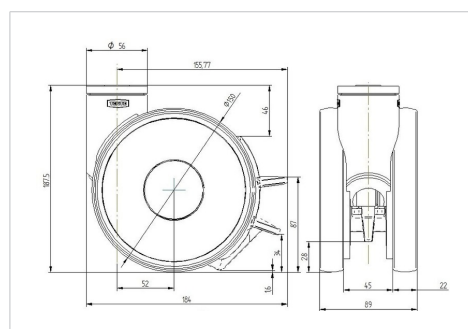
Technical Data

Wheel diameter	150 mm
Wheel width	22 mm
Castor width	89 mm
Size of Plate	77 x 67 mm
Plate hole centres	61.5/56 x 51.5/46.5 mm
Plate hole	8.5 mm
Dome-Ø	56 mm
Offset	52 mm
Swivel Interference	312 mm
Overall height	170 mm
Temperature	- 20 / + 60 °C
Standard	EN_12530
Weight	1.25 kg
Swivel Radius	156 mm
Hardness of tread	Shore A 92
Load capacity	110 kg
Load capacity (static)	220 kg

Advantages at a glance

Roll performance	● ● ● ● ●
Movement noise	● ● ● ● ○
Attrition	● ● ● ● ○
Corrosion resistance	● ● ● ● ○

Dimensions



Structure & Mounting

