

# MONO

## 5020PJH100L51-10 RAL7035

EAN 4031582308419

Swivel castor, housing made of Polyamide, with blind hole fitting. Wheel centre made of Polypropylene, Tread: TENTEprene (thermoplastic rubber), grey non-marking, with threadguards, plain bearing



BETTER MOBILITY. BETTER LIFE.

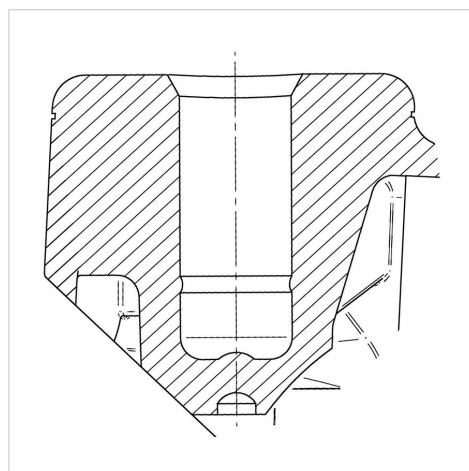


Picture may differ from original product

### Technical Data

Wheel diameter	100 mm
Wheel width	24 mm
Centre hole	10 mm
Offset	40 mm
Swivel Interference	180 mm
Overall height	120 mm
Temperature	- 20 / + 60 °C
Standard	EN_12528
Weight	0.2 kg
Swivel Radius	90 mm
Hardness of tread	Shore A 90
Load capacity	70 kg
Load capacity (static)	140 kg

### Structure & Mounting



### Advantages at a glance

Roll performance	● ● ● ○ ○
Movement noise	● ● ● ○ ○
Attrition	● ● ● ○ ○
Corrosion resistance	● ● ● ● ○