

# ANIKA

## 5920UAI055L51-10 Dom18

EAN 4031582459920

Swivel castor, housing made of Polyamide, with blind hole fitting. Wheel centre made of Polyamide, Tread: Polyurethane, plain bearing



BETTER MOBILITY. BETTER LIFE.

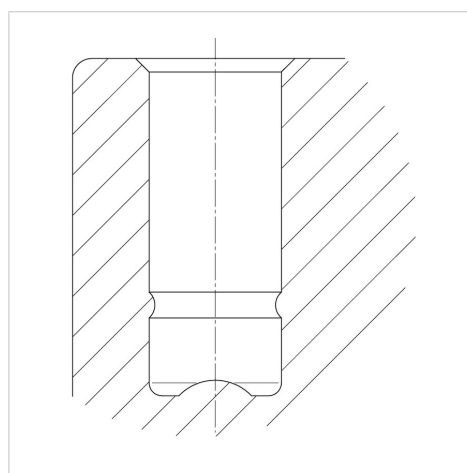


Picture may differ from original product

### Technical Data

|                        |                |
|------------------------|----------------|
| Wheel diameter         | 55 mm          |
| Wheel width            | 11 mm          |
| Castor width           | 37 mm          |
| Centre hole            | 10 mm          |
| Dome-Ø                 | 18 mm          |
| Offset                 | 17 mm          |
| Swivel Interference    | 96 mm          |
| Overall height         | 57 mm          |
| Temperature            | - 10 / + 40 °C |
| Standard               | EN_12528       |
| Weight                 | 0.65 kg        |
| Swivel Radius          | 64 mm          |
| Hardness of tread      | Shore A 92     |
| Load capacity          | 40 kg          |
| Load capacity (static) | 80 kg          |

### Structure & Mounting



### Advantages at a glance

|                      |           |
|----------------------|-----------|
| Roll performance     | ● ● ● ○ ○ |
| Movement noise       | ● ● ● ○ ○ |
| Attrition            | ● ● ● ○ ○ |
| Corrosion resistance | ● ● ● ● ○ |