

# FORMA

6941UFP150R05-28 white

EAN 4031582476507

Swivel castor with directional lock, housing made of alu die-casting, powder coated, solid plug fitting. Wheel centre made of Polyamide, Tread: elastic-tyre, non-marking, precision ball bearing



BETTER MOBILITY. BETTER LIFE.

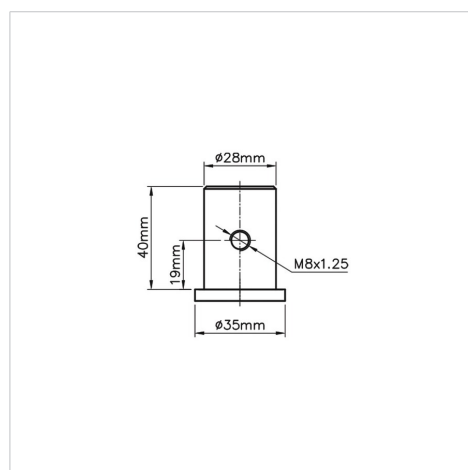


Picture may differ from original product

## Technical Data

Wheel diameter	150 mm
Wheel width	18 mm
Bolt-Ø	28 mm
Bolt length	40 mm
Offset	57 mm
Overall height	205 mm
Temperature	- 18 / + 120 °C
Swivel Radius	137 mm
Hardness of tread	Shore 60 A
Load capacity	135 kg

## Structure & Mounting



## Advantages at a glance

Roll performance	● ● ● ● ○
Movement noise	● ● ● ● ○
Attrition	● ● ● ● ○
Corrosion resistance	● ● ● ○ ○