

# FORMA

6945UFP125P33 grey

EAN 4031582477368

Swivel castor with wheel brake, housing made of alu die-casting, powder coated, plate fitting. Wheel centre made of Polyamide, Tread: elastic-tyre, non-marking, precision ball bearing



BETTER MOBILITY. BETTER LIFE.

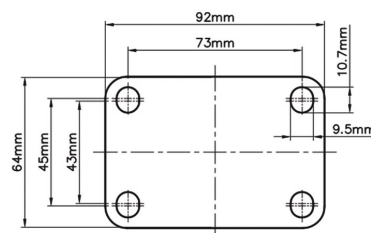


Picture may differ from original product

## Technical Data

Wheel diameter	125 mm
Wheel width	18 mm
Size of Plate	92 x 64 mm
Plate hole centres	73 x 45/43 mm
Plate hole	10.7 x 9.5 mm
Offset	41 mm
Overall height	166 mm
Temperature	- 18 / + 120 °C
Swivel Radius	117 mm
Hardness of tread	Shore 60 A
Load capacity	125 kg

## Structure & Mounting



## Advantages at a glance

Roll performance	● ● ● ● ○
Movement noise	● ● ● ● ○
Attrition	● ● ● ● ○
Corrosion resistance	● ● ● ○ ○