

INTEGRAL

7040XSX150R05-28

EAN 4031582342253

Swivel castor, frame made of stainless steel, precision ball bearing in swivel head, housing cover made of synthetic plastics, washable, solid plug fitting. Wheel centre made of Polyamide, electric conductive, Tread made of injected Polyurethane, with threadguards, precision ball bearing, sealed Washable beds must be sealed in the fitting area by the hospital bed manufacturer.



BETTER MOBILITY. BETTER LIFE.



Picture may differ from original product

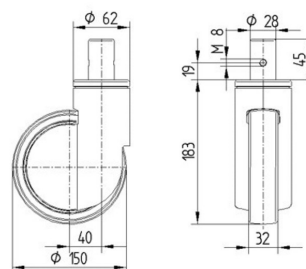
Technical Data

Wheel diameter	150 mm
Wheel width	32 mm
Bolt-Ø	28 mm
Bolt length	45 mm
Offset	40 mm
Swivel Interference	230 mm
Overall height	183 mm
Temperature	- 30 / + 80 °C
Standard	similar_EN12531
Swivel Radius	115 mm
Hardness of tread	Shore D 40
Load capacity	150 kg
Load capacity (static)	450 kg

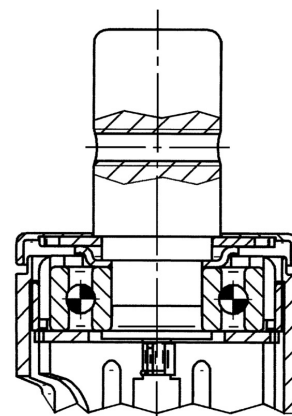
Advantages at a glance

Roll performance	● ● ● ○ ○
Movement noise	● ● ● ○ ○
Attrition	● ● ● ○ ○
Corrosion resistance	● ● ● ● ●

Dimensions



Structure & Mounting



INTEGRAL

7040XSX150R05-28

EAN 4031582342253



BETTER MOBILITY. BETTER LIFE.

Structure & Mounting

