

# LINEA

5945UAP075P30-8 LH RAL9002

EAN 4031582370799

Swivel castor with wheel brake, housing made of Polyamide, precision ball bearing in swivel head, bolt hole. Wheel centre made of Polyamide, Tread: Polyurethane, precision ball bearing



BETTER MOBILITY. BETTER LIFE.

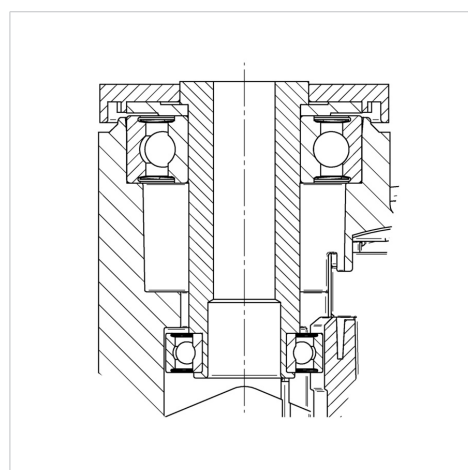


Picture may differ from original product

## Technical Data

Wheel diameter	75 mm
Wheel width	15 mm
Castor width	58 mm
Centre hole	8 mm
Dome-Ø	30 mm
Offset	23 mm
Swivel Interference	156 mm
Overall height	78 mm
Temperature	- 10 / + 40 °C
Standard	EN_12530
Weight	0.245 kg
Swivel Radius	78 mm
Hardness of tread	Shore A 92
Load capacity	90 kg
Load capacity (static)	180 kg

## Structure & Mounting



## Advantages at a glance

Roll performance	● ● ● ● ●
Movement noise	● ● ● ○ ○
Attrition	● ● ● ● ○
Corrosion resistance	● ● ● ● ○