



BETTER MOBILITY. BETTER LIFE.

## 349DUF160P67

EAN 4031582380712

Fixed castor with automatic locking system, central lock, Fork made of pressed steel, bright zinc plated, blue passivated, wheel axle with nut, plate fitting with integrated central lock.

Wheel centre made of Polyamide, Tread: elastic-tyre, non-marking, precision ball bearing

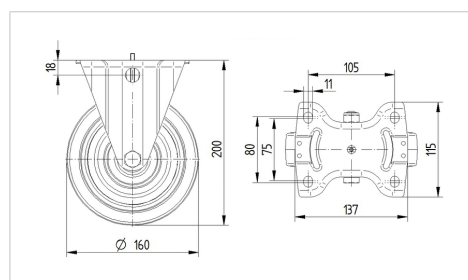


Picture may differ from original product

### Technical Data

Wheel diameter	160 mm
Wheel width	46 mm
Castor width	115 mm
Size of Plate	137 x 115 mm
Plate hole centres	105 x 80/75 mm
Plate hole	11 mm
Dome-Ø	115 mm
Overall height	200 mm
Temperature	- 20 / + 80 °C
Standard	EN_12532
Weight	1.939 kg
Hardness of tread	Shore A 63
Load capacity	300 kg
Load capacity (static)	600 kg

### Dimensions



### Advantages at a glance

Roll performance	● ● ● ○ ○
Movement noise	● ● ● ● ●
Attrition	● ● ● ○ ○
Corrosion resistance	● ● ● ○ ○



BETTER MOBILITY. BETTER LIFE.

## 349DUF160P67

EAN 4031582380712

### Structure & Mounting

