

ALPHA

349DUF200P67

EAN 4031582380729

Fixed castor with automatic locking system, central lock, Fork made of pressed steel, bright zinc plated, blue passivated, wheel axle with nut, plate fitting with integrated central lock.

Wheel centre made of Polyamide, Tread: elastic-tyre, non-marking, precision ball bearing



BETTER MOBILITY. BETTER LIFE.

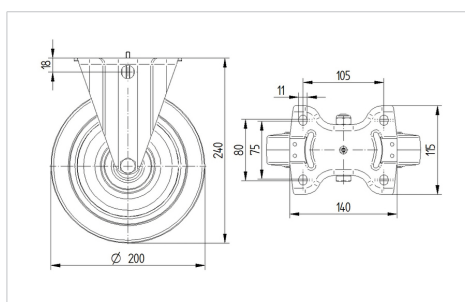


Picture may differ from original product

Technical Data

Wheel diameter	200 mm
Wheel width	46 mm
Castor width	115 mm
Size of Plate	137 x 115 mm
Plate hole centres	105 x 80/75 mm
Plate hole	11 mm
Dome-Ø	115 mm
Overall height	240 mm
Temperature	- 20 / + 80 °C
Standard	EN_12532
Weight	2.439 kg
Hardness of tread	Shore A 63
Load capacity	350 kg
Load capacity (static)	700 kg

Dimensions



Advantages at a glance

Roll performance	● ● ● ○ ○
Movement noise	● ● ● ● ●
Attrition	● ● ● ○ ○
Corrosion resistance	● ● ● ○ ○

ALPHA

349DUF200P67

EAN 4031582380729



BETTER MOBILITY. BETTER LIFE.

Structure & Mounting

