

# ALPHA

8499UFX160P67 Q1-13

EAN 4031582381115

Fixed castor with central lock, Fork made of Stainless Steel, wheel axle with nut. The locking mechanism is activated through the cam via a lever. The lever remains in the set position. The lever has to be actuated again to reverse the brake bolt to the base position. Cam bore perpendicular to the long side of plate, SW 13 mm, plate fitting with integrated central lock.

Wheel centre made of Polyamide, Tread: elastic-tyre, non-marking, with small threadguards, precision ball bearing, sealed



BETTER MOBILITY. BETTER LIFE.

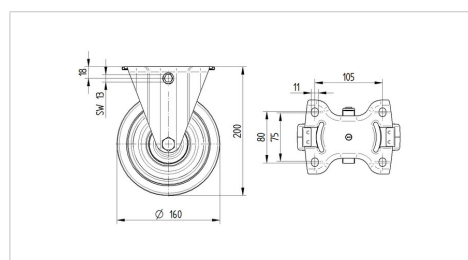


Picture may differ from original product

## Technical Data

|                        |                |
|------------------------|----------------|
| Wheel diameter         | 160 mm         |
| Wheel width            | 46 mm          |
| Size of Plate          | 137 x 115 mm   |
| Plate hole centres     | 105 x 80/75 mm |
| Plate hole             | 11 mm          |
| Overall height         | 200 mm         |
| Temperature            | - 20 / + 80 °C |
| Standard               | EN_12532       |
| Hardness of tread      | Shore A 64     |
| Load capacity          | 300 kg         |
| Load capacity (static) | 600 kg         |

## Dimensions



## Advantages at a glance

|                      |           |
|----------------------|-----------|
| Roll performance     | ● ● ● ○ ○ |
| Movement noise       | ● ● ● ● ● |
| Attrition            | ● ● ● ○ ○ |
| Corrosion resistance | ● ● ● ● ● |

# ALPHA

8499UFX160P67 Q1-13

EAN 4031582381115



BETTER MOBILITY. BETTER LIFE.

## Structure & Mounting

---

