

# DELTA

## 3648ITP125P63 Flat

EAN 4031582337389

Fixed castor, Fork made of heavy pressed steel, bright zinc plated, blue passivated, wheel axle with nut, plate fitting.  
Wheel centre made of Aluminium, Tread: Polyurethane, casted, precision ball bearing



BETTER MOBILITY. BETTER LIFE.

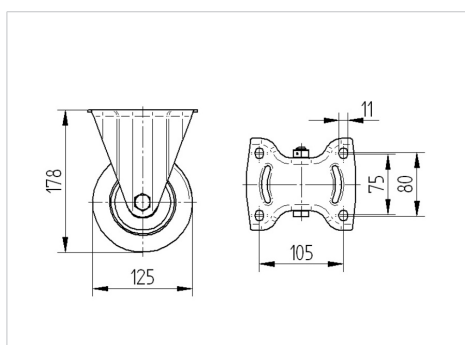


Picture may differ from original product

### Technical Data

|                        |                |
|------------------------|----------------|
| Wheel diameter         | 125 mm         |
| Wheel width            | 50 mm          |
| Castor width           | 115 mm         |
| Size of Plate          | 137 x 115,0 mm |
| Plate hole centres     | 105 x 80/75 mm |
| Plate hole             | 11 mm          |
| Dome-Ø                 | 115 mm         |
| Overall height         | 178 mm         |
| Temperature            | - 10 / + 60 °C |
| Standard               | EN_12532       |
| Weight                 | 1.715 kg       |
| Hardness of tread      | Shore A 92     |
| Load capacity          | 500 kg         |
| Load capacity (static) | 1000 kg        |

### Dimensions



### Advantages at a glance

|                      |           |
|----------------------|-----------|
| Roll performance     | ● ● ● ○ ○ |
| Movement noise       | ● ● ● ○ ○ |
| Attrition            | ● ● ● ● ○ |
| Corrosion resistance | ● ● ● ○ ○ |

# DELTA

3648ITP125P63 Flat

EAN 4031582337389



BETTER MOBILITY. BETTER LIFE.

## Structure & Mounting

