

OMIKRON FLEX

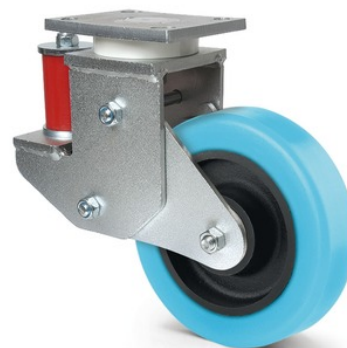
9850FCP200P63-75shA HL50

EAN 4031582479089

Swivel castor, plate fitting. Wheel centre made of cast iron, Tread: Polyurethane, casted, Ultratech, suitable especially for higher speeds of up to 16 km/h, precision ball bearing



BETTER MOBILITY. BETTER LIFE.



Picture may differ from original product

Technical Data

Wheel diameter	200 mm
Wheel width	50 mm
Size of Plate	140 x 110 mm
Plate hole centres	105 x 80 mm
Plate hole	13 mm
Centre hole	105 x 80 mm
Offset	100 mm
Swivel Interference	400 mm
Overall height	272 mm
Overall height with load	237 mm
Maximum compression	35 mm
Temperature	-20 / +60 °C
Standard	EN_12533
Weight	11 kg
Swivel Radius	200 mm
Hardness of tread	Shore A 75
Load capacity	900 kg
Load capacity (static)	1200 kg

Advantages at a glance

Roll performance	● ● ● ● ●
Movement noise	● ● ● ● ○
Attrition	● ● ● ● ●
Corrosion resistance	● ● ● ○ ○