

ALPHA

8499UFX200P67 Q0-13

EAN 4031582381108

Fixed castor with central lock, Fork made of Stainless Steel, wheel axle with nut. The locking mechanism is activated through the cam via a lever. The lever reverses automatically to the base position. Cam bore perpendicular to the long side of plate, SW 13 mm, plate fitting with integrated central lock.

Wheel centre made of Polyamide, Tread: elastic-tyre, non-marking, with small threadguards, precision ball bearing, sealed



BETTER MOBILITY. BETTER LIFE.

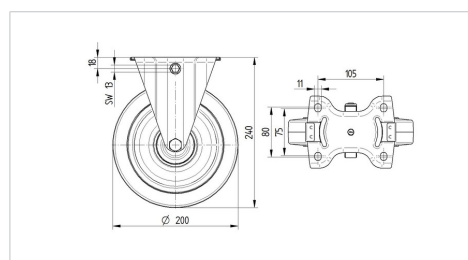


Picture may differ from original product

Technical Data

Wheel diameter	200 mm
Wheel width	46 mm
Size of Plate	137 x 115 mm
Plate hole centres	105 x 80/75 mm
Plate hole	11 mm
Overall height	240 mm
Temperature	- 20 / + 80 °C
Standard	EN_12532
Hardness of tread	Shore A 64
Load capacity	350 kg
Load capacity (static)	700 kg

Dimensions



Advantages at a glance

Roll performance	● ● ● ○ ○
Movement noise	● ● ● ● ●
Attrition	● ● ● ○ ○
Corrosion resistance	● ● ● ● ●

ALPHA

8499UFX200P67 Q0-13

EAN 4031582381108



BETTER MOBILITY. BETTER LIFE.

Structure & Mounting

