

# AGILA

## 2477PJP075P40

EAN 4031582050431

Swivel castor with total lock, tail end of castor, housing made of pressed steel, bright zinc plated, blue passivated, double ball bearing swivel head, plate fitting. Wheel centre made of Polypropylene, Tread: TENTEprene (thermoplastic rubber), grey non-marking, precision ball bearing, with threadguards



BETTER MOBILITY. BETTER LIFE.



Picture may differ from original product

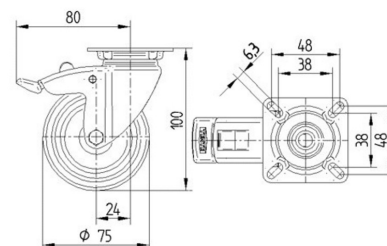
### Technical Data

|                        |                  |
|------------------------|------------------|
| Wheel diameter         | 75 mm            |
| Wheel width            | 25 mm            |
| Castor width           | 43 mm            |
| Size of Plate          | 60 x 60 mm       |
| Plate hole centres     | 48/38 x 48/38 mm |
| Plate hole             | 6,3 mm           |
| Dome-Ø                 | 43 mm            |
| Offset                 | 24 mm            |
| Swivel Interference    | 160 mm           |
| Overall height         | 100 mm           |
| Temperature            | - 20 / + 60 °C   |
| Standard               | EN_12530         |
| Weight                 | 0.341 kg         |
| Swivel Radius          | 80 mm            |
| Hardness of tread      | Shore A 87       |
| Load capacity          | 75 kg            |
| Load capacity (static) | 150 kg           |

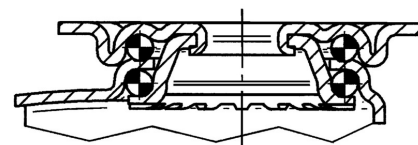
### Advantages at a glance

|                      |           |
|----------------------|-----------|
| Roll performance     | ● ● ● ○ ○ |
| Movement noise       | ● ● ● ○ ○ |
| Attrition            | ● ● ● ○ ○ |
| Corrosion resistance | ● ● ● ○ ○ |

### Dimensions



### Structure & Mounting



# AGILA

2477PJP075P40

EAN 4031582050431



BETTER MOBILITY. BETTER LIFE.

## Structure & Mounting

