

# E-DRIVE OPTIMA

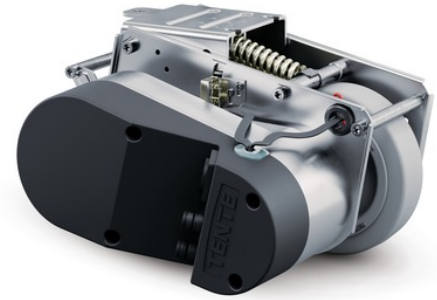
EDOAUFF125P60

EAN 4031582497885



BETTER MOBILITY. BETTER LIFE.

E-Drive optima, drive unit with integrated control unit, can be lowered and raised, brushless motor with deceleration function and constant torque. Solid housing made of galvanized sheet steel, the wheel can be replaced by the customer and ordered individually, maintenance-free.



Picture may differ from original product

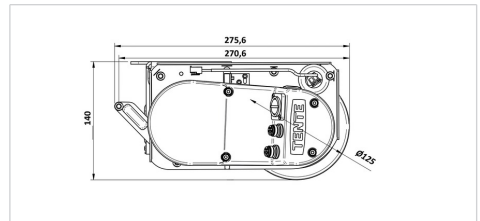
## Technical Data

Wheel	UFF, solid rubber, non-marking, Shore 63A
Wheel size	125 mm
Wheel width	35 mm
Installation height	170 mm
Length	max. 315 mm (Emergency release activated)
Emergency release	Mechanical
Width	220 mm
Drive motor	24 V DC
Driving directions	forward / backward
Height (folded)	140 mm
Floor compensation	+/- 20 mm
Max. height of threshold that can be crossed	15 mm
Max. Lifting force / contact pressure	400 N
Weight	7.25 kg

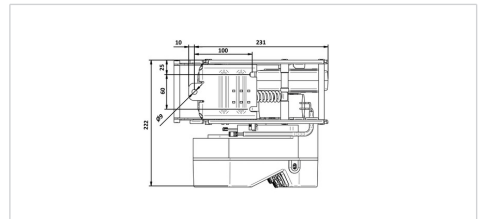
## Drive motor

Nominal voltage	18 V DC
Nominal torque	1 Nm
Nominal power	260 W
Nominal RPM	2100 rpm
Nominal voltage	12.1 A

## Dimensions



## Structure & Mounting



# E-DRIVE OPTIMA

EDOAUFF125P60

EAN 4031582497885



BETTER MOBILITY. BETTER LIFE.

Operating mode	S1
Max. Speed	6 km/h

## Actuator

Nominal voltage	24 V DC
Nominal torque	4 Nm
Nominal power	14.8 W
Nominal RPM	35.3 min/-1
Nominal voltage	3.5 A
Operating mode	periodic S3
Permitted environmental conditions	Operating temperature 5 to 50° C (recommended 15 to 50° C), humidity 90%, non-condensing
Permitted storage temperatures	-10 bis +40 °C
Protection class	IP X4 (splash water from all sides, all plugs connected)

## Advantages at a glance

Roll performance	● ● ● ● ●
Movement noise	● ● ● ○ ○
Attrition	● ● ● ○ ○
Corrosion resistance	● ● ● ○ ○