

ANIKA

5920UAI065L51-10 DOM18

EAN 4031582433395

Swivel castor, housing made of Polyamide, with blind hole fitting. Wheel centre made of Polyamide, Tread: Polyurethane, plain bearing



BETTER MOBILITY. BETTER LIFE.

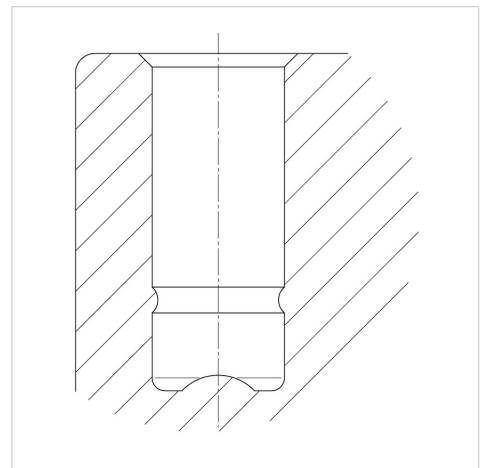


Picture may differ from original product

Technical Data

| | |
|------------------------|----------------|
| Wheel diameter | 65 mm |
| Wheel width | 11 mm |
| Castor width | 39.5 mm |
| Centre hole | 10 mm |
| Dome-Ø | 18 mm |
| Swivel Interference | 111 mm |
| Overall height | 67 mm |
| Temperature | - 10 / + 40 °C |
| Standard | EN_12528 |
| Weight | 0.075 kg |
| Swivel Radius | 55.5 mm |
| Hardness of tread | Shore A 92 |
| Load capacity | 50 kg |
| Load capacity (static) | 100 kg |

Structure & Mounting



Advantages at a glance

| | |
|----------------------|-----------|
| Roll performance | ● ● ● ○ ○ |
| Movement noise | ● ● ● ○ ○ |
| Attrition | ● ● ● ○ ○ |
| Corrosion resistance | ● ● ● ● ○ |