

ANIKA

5923UAI065L51-10 Dom18

EAN 4031582437782

Swivel castor with intermittend brake, housing made of Polyamide, with blind hole fitting. Wheel centre made of Polyamide, Tread: Polyurethane, plain bearing



BETTER MOBILITY. BETTER LIFE.

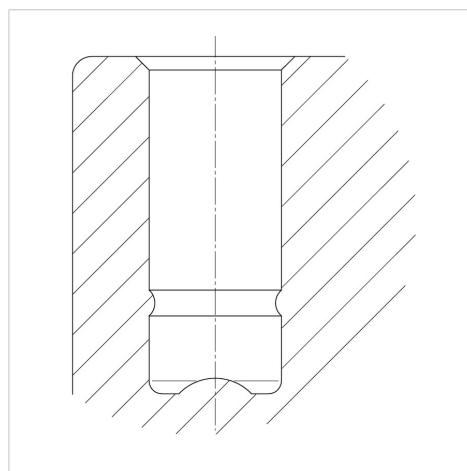


Picture may differ from original product

Technical Data

Wheel diameter	65 mm
Wheel width	11 mm
Castor width	39.5 mm
Centre hole	10 mm
Dome-Ø	18 mm
Offset	20 mm
Swivel Interference	110 mm
Overall height	67 mm
Temperature	-10/+40 °C
Standard	EN12529
Weight	0.075 kg
Swivel Radius	55.4 mm
Hardness of tread	Shore 92ShA

Structure & Mounting



Advantages at a glance

Roll performance	● ● ● ○ ○
Movement noise	● ● ● ○ ○
Attrition	● ● ● ○ ○
Corrosion resistance	● ● ● ○ ○