

OMIKRON FLEX

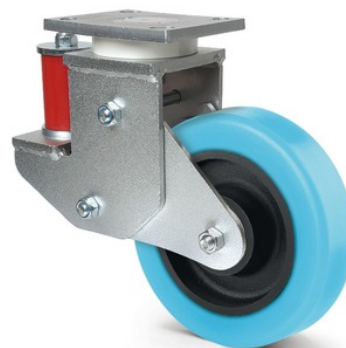
9850FCP200P63-75shA HL50

EAN 4031582479089

Swivel castor, plate fitting. Wheel centre made of cast iron, Tread: Polyurethane, casted, Ultratech, suitable especially for higher speeds of up to 16 km/h, precision ball bearing



BETTER MOBILITY. BETTER LIFE.



Picture may differ from original product

Technical Data

| | |
|--------------------------|--------------|
| Wheel diameter | 200 mm |
| Wheel width | 50 mm |
| Size of Plate | 140 x 110 mm |
| Plate hole centres | 105 x 80 mm |
| Plate hole | 13 mm |
| Centre hole | 105 x 80 mm |
| Offset | 100 mm |
| Swivel Interference | 400 mm |
| Overall height | 272 mm |
| Overall height with load | 237 mm |
| Maximum compression | 35 mm |
| Temperature | -20 / +60 °C |
| Standard | EN_12533 |
| Weight | 11 kg |
| Swivel Radius | 200 mm |
| Hardness of tread | Shore A 75 |
| Load capacity | 900 kg |
| Load capacity (static) | 1200 kg |

Advantages at a glance

| | |
|----------------------|-----------|
| Roll performance | ● ● ● ● ● |
| Movement noise | ● ● ● ● ○ |
| Attrition | ● ● ● ● ● |
| Corrosion resistance | ● ● ● ○ ○ |