

**LINEA****5941UAP100R05-22 RAL9002**

EAN 4031582368734

Swivel castor with directional lock, housing made of Polyamide, precision ball bearing in swivel head, solid plug fitting. Wheel centre made of Polyamide, Tread: Polyurethane, precision ball bearing

**TENTE**

BETTER MOBILITY. BETTER LIFE.



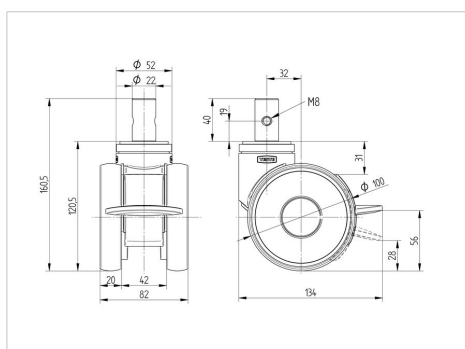
Picture may differ from original product

**Technical Data**

|                        |                |
|------------------------|----------------|
| Wheel diameter         | 100 mm         |
| Wheel width            | 20 mm          |
| Castor width           | 82 mm          |
| Bolt-Ø                 | 22 mm          |
| Bolt length            | 40 mm          |
| Dome-Ø                 | 52 mm          |
| Offset                 | 32 mm          |
| Swivel Interference    | 216 mm         |
| Overall height         | 120 mm         |
| Temperature            | - 10 / + 40 °C |
| Standard               | EN_12530       |
| Weight                 | 0.922 kg       |
| Swivel Radius          | 108 mm         |
| Hardness of tread      | Shore A 92     |
| Load capacity          | 120 kg         |
| Load capacity (static) | 240 kg         |

**Advantages at a glance**

|                      |           |
|----------------------|-----------|
| Roll performance     | ● ● ● ● ● |
| Movement noise       | ● ● ● ○ ○ |
| Attrition            | ● ● ● ● ○ |
| Corrosion resistance | ● ● ● ● ○ |

**Dimensions****Structure & Mounting**