

ALPHA

3476UFX200P67

EAN 4031582380514

Swivel castor with central total lock, housing made of pressed steel, bright zinc plated, blue passivated, double ball bearing swivel head, wheel axle with nut, dustguard, plate fitting with integrated central lock. Wheel centre made of Polyamide, Tread: elastic-tyre, non-marking, with small threadguards, precision ball bearing, sealed

Hint: The brake pedal is attached to the mounting plate. The swivel mechanism is independent of the mounting plate. Therefore the break pedal is always in the same position.



BETTER MOBILITY. BETTER LIFE.

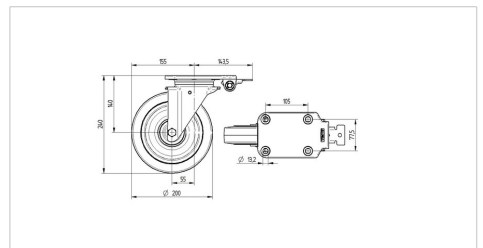


Picture may differ from original product

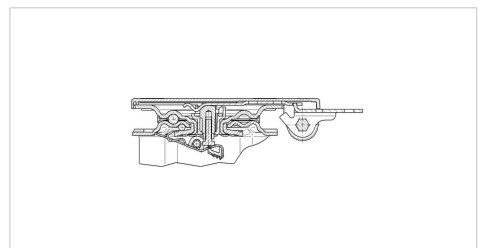
Technical Data

Wheel diameter	200 mm
Wheel width	46 mm
Castor width	99 mm
Size of Plate	176 x 112 mm
Plate hole centres	105 x 77,5 mm
Plate hole	13 mm
Dome-Ø	96 mm
Offset	55 mm
Swivel Interference	287 mm
Overall height	240 mm
Temperature	- 20 / + 80 °C
Standard	EN_12532
Weight	3.107 kg
Swivel Radius	143.5 mm
Hardness of tread	Shore A 63
Load capacity	300 kg
Load capacity (static)	600 kg

Dimensions



Structure & Mounting



Advantages at a glance

Roll performance	● ● ● ○ ○
Movement noise	● ● ● ● ●
Attrition	● ● ● ○ ○
Corrosion resistance	● ● ● ○ ○

ALPHA

3476UFX200P67

EAN 4031582380514



BETTER MOBILITY. BETTER LIFE.

Structure & Mounting

