

# LINEA

## 5925XOI065L51-11 DOM23x43,6

EAN 4031582344233

Swivel castor with wheel brake, housing made of Polyamide, with blind hole fitting. Wheel centre made of Polyamide, plain bearing, electric conductive



BETTER MOBILITY. BETTER LIFE.

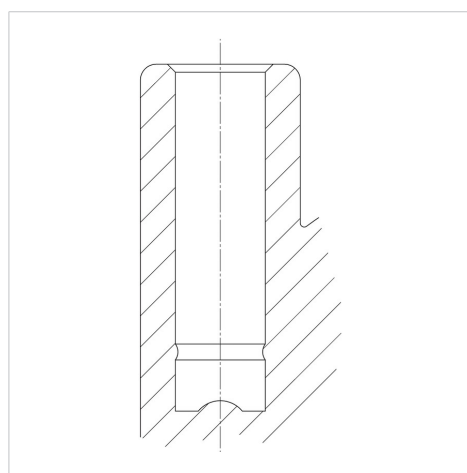


Picture may differ from original product

### Technical Data

|                        |                |
|------------------------|----------------|
| Wheel diameter         | 65 mm          |
| Wheel width            | 7 mm           |
| Castor width           | 46 mm          |
| Centre hole            | 11 mm          |
| Dome-Ø                 | 23 mm          |
| Swivel Interference    | 154 mm         |
| Overall height         | 91.5 mm        |
| Temperature            | - 10 / + 40 °C |
| Standard               | EN_12528       |
| Swivel Radius          | 77 mm          |
| Load capacity          | 50 kg          |
| Load capacity (static) | 100 kg         |

### Structure & Mounting



### Advantages at a glance

|                      |           |
|----------------------|-----------|
| Roll performance     | ● ● ● ○ ○ |
| Movement noise       | ● ● ● ○ ○ |
| Attrition            | ● ● ● ● ● |
| Corrosion resistance | ● ● ● ● ○ |