



BETTER MOBILITY. BETTER LIFE.

## Foot Protection Ø200

EAN 4031582439045

Flexible foot protection for maximum occupational safety; suitable for use with our 3640, 4680, 9650 and 9680 housing ranges, as fixed, swivel or locking castor models.

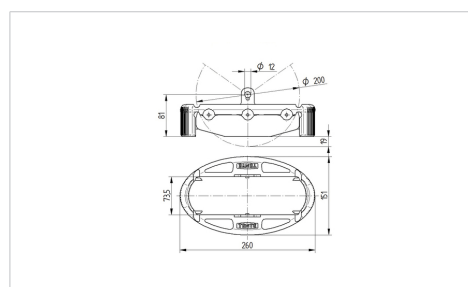


Picture may differ from original product

### Technical Data

Temperature	-20 / +60 °C
Weight	0.75 kg
Suitable wheel sizes	200 mm
Length	260 mm
Width	151 mm
Ground clearance	20 mm
Hardness of rubber flap	A 75 Shore

### Dimensions



### Advantages at a glance

Roll performance	○ ○ ○ ○ ○
Movement noise	○ ○ ○ ○ ○
Attrition	● ● ● ○ ○
Corrosion resistance	● ● ● ○ ○