

AGILA

2475DIK050P30-11

EAN 4031582050073

Swivel castor with wheel brake, housing made of pressed steel, bright zinc plated, blue passivated, double ball bearing swivel head, wheel axle with nut, bolt hole. Wheel centre made of pressed steel, Tread: solid rubber, grey non-marking, with threadguards, cone ball bearing. Castors can be mounted with standard screws of any length.



BETTER MOBILITY. BETTER LIFE.



Picture may differ from original product

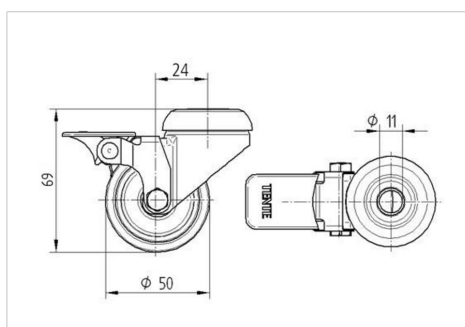
Technical Data

| | |
|------------------------|----------------|
| Wheel diameter | 50 mm |
| Wheel width | 19 mm |
| Castor width | 43 mm |
| Centre hole | 11 mm |
| Dome-Ø | 41 mm |
| Offset | 24 mm |
| Swivel Interference | 164 mm |
| Overall height | 69 mm |
| Temperature | - 20 / + 85 °C |
| Standard | EN_12530 |
| Weight | 0.225 kg |
| Swivel Radius | 82 mm |
| Hardness of tread | Shore A 80 |
| Load capacity | 40 kg |
| Load capacity (static) | 80 kg |

Advantages at a glance

| | |
|----------------------|-----------|
| Roll performance | ● ● ● ○ ○ |
| Movement noise | ● ● ● ○ ○ |
| Attrition | ● ● ● ○ ○ |
| Corrosion resistance | ● ● ● ○ ○ |

Dimensions



Structure & Mounting

