

# LINEA

## 5941UAP150P50

EAN 4031582408959

Swivel caster with directional lock, housing made of Polyamide, precision ball bearing in swivel head, plate fitting. Wheel center made of Polyamide, Tread: Polyurethane, precision ball bearing



BETTER MOBILITY. BETTER LIFE.

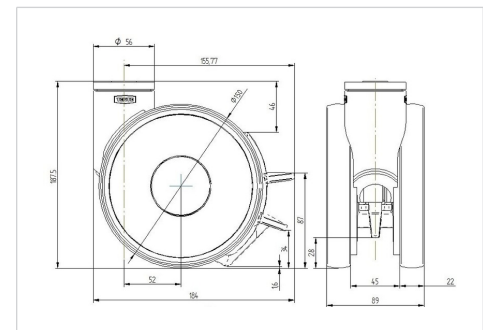


Picture may differ from original product

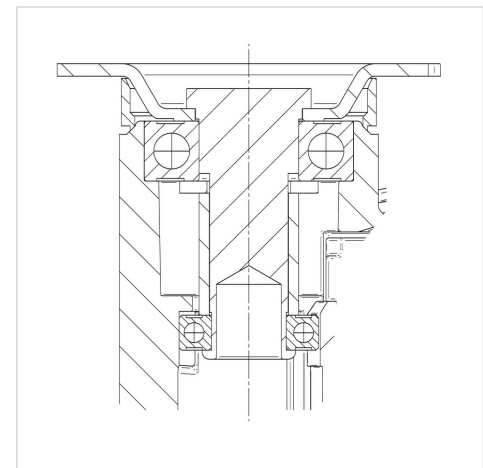
### Technical Data

Wheel diameter	5.91 in
Wheel width	0.87 in
Caster width	3.50 in
Plate size	3.03 x 2.64 in
Plate hole centers	2.42/2.20 x 2.03/1.83 in
Plate hole	0.33 in
Dome-Ø	2.20 in
Offset	2.05 in
Swivel Interference	12.28 in
Overall height	6.69 in
Temperature	- 4 / + 140 °F
Standard	EN 12530
Weight	2.756 lbs
Swivel Radius	6.14 in
Hardness of tread	Shore A 92
Load capacity (dynamic)	245 lbs
Load capacity (static)	485 lbs

### Dimensions



### Structure & Mounting



### Advantages at a glance

Roll performance	● ● ● ● ●
Movement noise	● ● ● ● ○
Attrition	● ● ● ● ○
Corrosion resistance	● ● ● ● ○