

LINEA

5945UAP050L51-8 7011

EAN 4031582430226

Swivel caster with wheel brake, housing made of Polyamide, precision ball bearing in swivel head, with blind hole fitting. Wheel center made of Polyamide, Tread: Polyurethane, precision ball bearing



BETTER MOBILITY. BETTER LIFE.



Picture may differ from original product

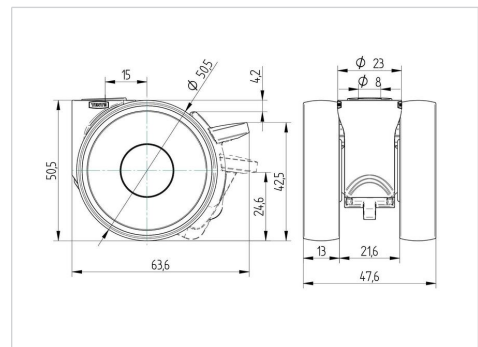
Technical Data

Wheel diameter	1.97 in
Wheel width	0.51 in
Caster width	1.87 in
Center hole	0.31 in
Dome-Ø	0.91 in
Swivel Interference	4.02 in
Overall height	1.97 in
Temperature	- 14 / + 104 °F
Standard	EN 12530
Weight	0.203 lbs
Swivel Radius	2.01 in
Hardness of tread	Shore A 92
Load capacity (dynamic)	220 lbs
Load capacity (static)	440 lbs

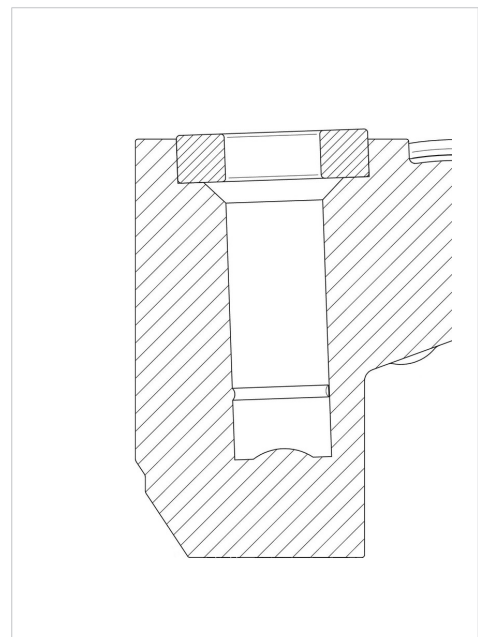
Advantages at a glance

Roll performance	● ● ● ● ●
Movement noise	● ● ● ● ○
Attrition	● ● ● ● ●
Corrosion resistance	● ● ● ● ○

Dimensions



Structure & Mounting



LINEA

5945UAP050L51-8 7011

EAN 4031582430226



BETTER MOBILITY. BETTER LIFE.

Structure & Mounting

