

# INTEGRAL

2044UAP125R36-32S30 4xM6

EAN 4031582300178

Swivel Caster with central, total or directional lock, Frame made of pressed steel, precision ball bearing in swivel head and wheel, housing cover made of synthetic plastic, stem with cam hole for profile bars, short version. Wheel center made of Polyamide, Tread: Polyurethane, precision ball bearing  
Hint: TÜV Süd certified product.



BETTER MOBILITY. BETTER LIFE.



Picture may differ from original product

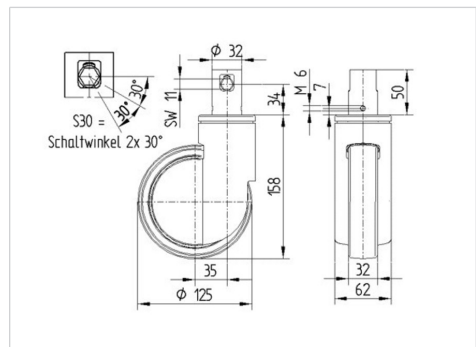
## Technical Data

Wheel diameter	4.92 in
Wheel width	1.26 in
Caster width	2.44 in
Bolt-Ø	1.26 in
Bolt length	2.01 in
Dome-Ø	2.44 in
Offset	1.38 in
Swivel Interference	7.68 in
Overall height	6.22 in
Temperature	- 13 / - 13 °F
Standard	EN 12531
Weight	2.152 lbs
Swivel Radius	3.84 in
Hardness of tread	Shore D 42
Load capacity (dynamic)	330 lbs
Load capacity (static)	990 lbs

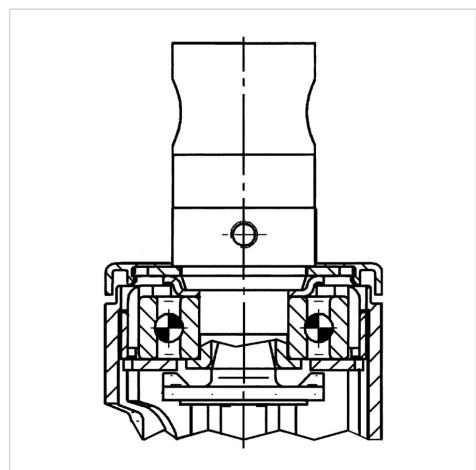
## Advantages at a glance

Roll performance	● ● ● ○ ○
Movement noise	● ● ● ○ ○
Attrition	● ● ● ○ ○
Corrosion resistance	● ● ● ○ ○

## Dimensions



## Structure & Mounting



# INTEGRAL

2044UAP125R36-32S30 4xM6

EAN 4031582300178



BETTER MOBILITY. BETTER LIFE.

## Structure & Mounting

---

A collection of three logos is displayed within a white rectangular frame. At the top left is the iF logo, a red square with white lowercase letters 'i' and 'f'. To its right, the text "product design award winner" is written in red. Below the iF logo is the Red Dot logo, a red sphere with white horizontal stripes. To its right, the text "reddot design award winner" is written in black. At the bottom left is the TÜV SÜD logo, a blue octagonal shield with a white border, containing the letters "TUV" in large white font and "SUD" in smaller white font below it. At the very bottom of the shield, the text "Production monitored Type tested" is written in small white font.