

INTEGRAL TWIN

2944USX150R26-28D45 RAL 9002 4xM8

EAN 4031582438918

Swivel Caster with central, total or directional lock, Frame made of pressed steel, precision ball bearing in swivel head, housing with synthetic cover, stem with cam hole for profile bars. Wheel center made of Polyamide, tread made of injected Polyurethane, with threadguards, precision ball bearing, sealed

Hint: TÜV Süd certified product. Washable casters must be sealed in the fitting area by the hospital bed manufacturer.



BETTER MOBILITY. BETTER LIFE.

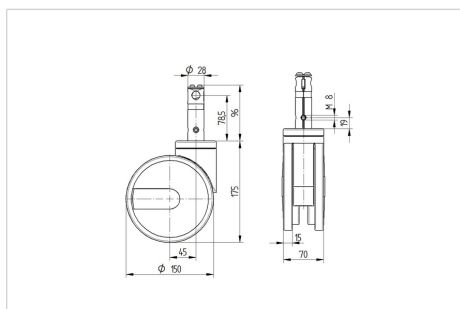


Picture may differ from original product

Technical Data

Wheel diameter	5.91 in
Wheel width	0.59 in
Caster width	2.95 in
Bolt-Ø	1.10 in
Bolt length	3.78 in
Dome-Ø	2.76 in
Offset	1.77 in
Swivel Interference	9.76 in
Overall height	6.89 in
Temperature	- 13 / - 13 °F
Standard	EN 12531
Weight	3.192 lbs
Swivel Radius	4.88 in
Hardness of tread	Shore D 40
Load capacity (dynamic)	330 lbs
Load capacity (static)	990 lbs

Dimensions



Advantages at a glance

Roll performance	● ● ● ● ●
Movement noise	● ● ● ○ ○
Attrition	● ● ● ● ○
Corrosion resistance	● ● ● ○ ○

INTEGRAL TWIN

2944USX150R26-28D45 RAL 9002 4xM8

EAN 4031582438918



BETTER MOBILITY. BETTER LIFE.

Structure & Mounting



Design Award Winner

German Designer Club



**reddot design award
winner**

