

AGILA TWIN

2970UOI036P40 (18)

EAN 4031582210835

Swivel caster, housing made of pressed steel, bright zinc plated, blue passivated, double ball bearing swivel head, wheel axle with nut, plate fitting. Wheel center made of Polyamide, plain bearing



BETTER MOBILITY. BETTER LIFE.



Picture may differ from original product

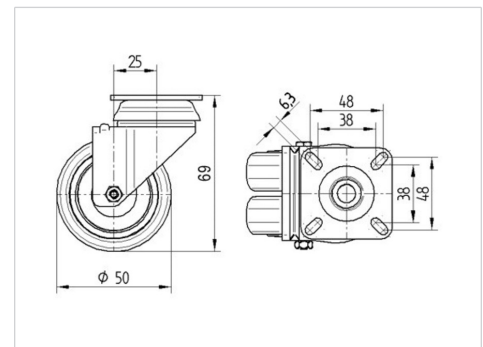
Technical Data

Wheel diameter	1.42 in
Wheel width	0.79 in
Plate size	2.36 x 2.36 in
Plate hole centers	1.89/1.50 x 1.89/1.50 in
Plate hole	0.25 in
Offset	0.98 in
Swivel Interference	4.17 in
Overall height	2.44 in
Temperature	- 40 / + 176 °F
Standard	EN 12530
Weight	0.408 lbs
Swivel Radius	2.09 in
Hardness of tread	Shore D 75
Load capacity (dynamic)	110 lbs
Load capacity (static)	220 lbs

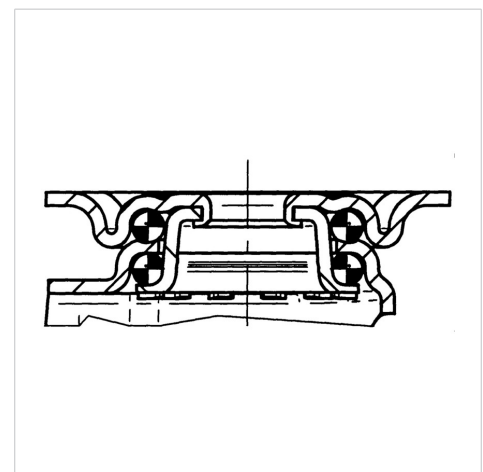
Advantages at a glance

Roll performance	● ● ● ○ ○
Movement noise	● ● ● ○ ○
Attrition	● ● ● ● ●
Corrosion resistance	● ● ● ○ ○

Dimensions



Structure & Mounting



AGILA TWIN

2970UOI036P40 (18)

EAN 4031582210835



BETTER MOBILITY. BETTER LIFE.

Structure & Mounting

