

AGILA TWIN

2976PJH075P54

EAN 4031582302875

Swivel caster with central lock, housing made of pressed steel, bright zinc plated, blue passivated, double ball bearing swivel head, wheel axle with nut, Stainless Steel balls, plate fitting. Wheel center made of Polypropylene, Tread: TENTEprene (thermoplastic rubber), grey non-marking, with threadguards, plain bearing



BETTER MOBILITY. BETTER LIFE.



Picture may differ from original product

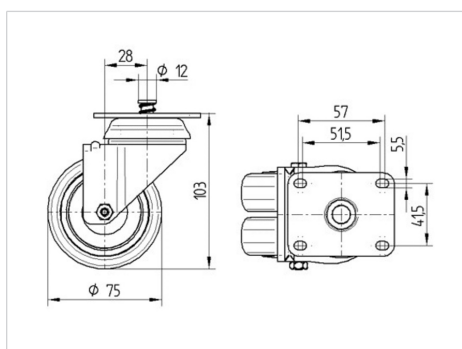
Technical Data

Wheel diameter	2.95 in
Wheel width	0.98 in
Caster width	2.80 in
Plate size	2.76 x 2.17 in
Plate hole centers	2.24/2.01 x 1.61 in
Plate hole	0.22 in
Dome-Ø	2.56 in
Offset	1.10 in
Swivel Interference	5.16 in
Overall height	4.06 in
Temperature	- 4 / + 140 °F
Standard	EN 12530
Weight	1.279 lbs
Swivel Radius	2.58 in
Hardness of tread	Shore A 87
Load capacity (dynamic)	220 lbs
Load capacity (static)	440 lbs

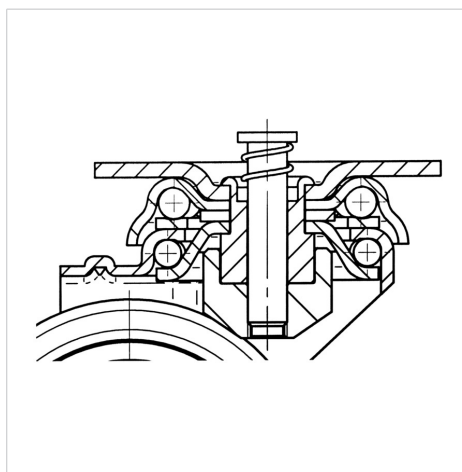
Advantages at a glance

Roll performance	● ● ● ○ ○
Movement noise	● ● ● ○ ○
Attrition	● ● ● ○ ○
Corrosion resistance	● ● ● ○ ○

Dimensions



Structure & Mounting



AGILA TWIN

2976PJH075P54

EAN 4031582302875



BETTER MOBILITY. BETTER LIFE.

Structure & Mounting

