

5328UAP125P50

EAN 4031582310306

Fixed caster, Fork and wheels made from high grade synthetic materials, with integrated threadguards, all metal parts are bright zinc plated, yellow thick layer passivated, plate fitting.
Wheel center made of Polyamide, Tread: Polyurethane, precision ball bearing



BETTER MOBILITY. BETTER LIFE.

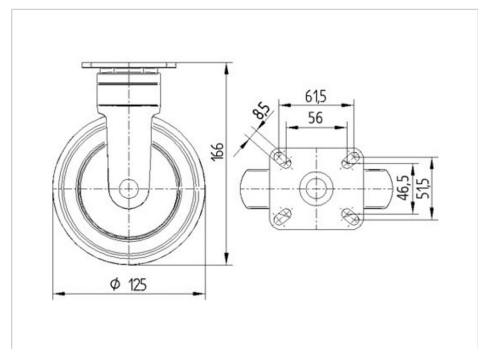


Picture may differ from original product

Technical Data

Wheel diameter	4.92 in
Wheel width	1.26 in
Plate size	3.03 x 2.64 in
Plate hole centers	2.42/2.20 x 2.03/1.83 in
Plate hole	0.33 in
Overall height	6.54 in
Temperature	- 14 / + 104 °F
Standard	EN 12530
Weight	1.455 lbs
Hardness of tread	Shore A 92
Load capacity (dynamic)	220 lbs
Load capacity (static)	440 lbs

Dimensions



Advantages at a glance

Roll performance	● ● ● ○ ○
Movement noise	● ● ● ● ○
Attrition	● ● ● ● ○
Corrosion resistance	● ● ● ● ○



BETTER MOBILITY. BETTER LIFE.

5328UAP125P50

EAN 4031582310306

Structure & Mounting

