

KAPPA

9650ITP250P63 Flat

EAN 4031582314335

Swivel caster, housing and plate steel-welded, bright zinc plated, blue passivated, sealed swivel bearing with dual purpose bearing and tapered roller bearing, threaded king pin and locking nut secured, grease nipple, wheel axle with nut, plate fitting. Wheel center made of Aluminum, Tread: Polyurethane, casted, precision ball bearing



BETTER MOBILITY. BETTER LIFE.

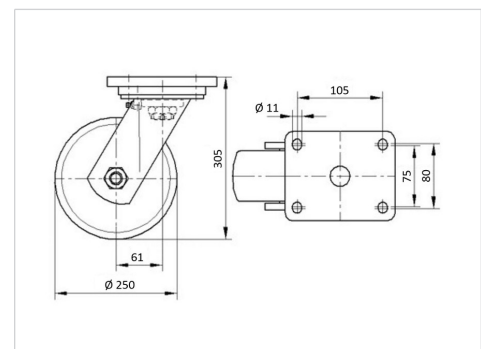


Picture may differ from original product

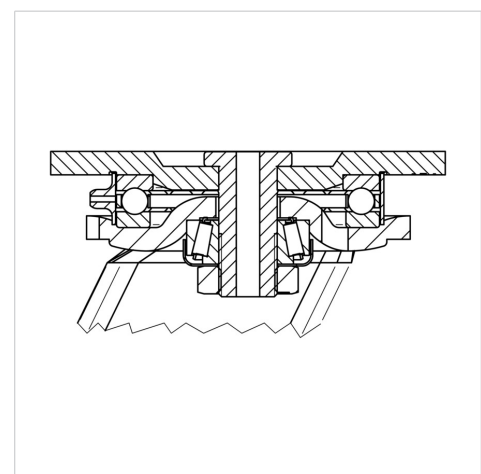
Technical Data

| | |
|-------------------------|---------------------|
| Wheel diameter | 9.84 in |
| Wheel width | 2.17 in |
| Caster width | 4.33 in |
| Plate size | 5.31 x 4.33 in |
| Plate hole centers | 4.13 x 3.15/2.95 in |
| Plate hole | 0.43 in |
| Dome-Ø | 4.37 in |
| Offset | 2.40 in |
| Swivel Interference | 14.76 in |
| Overall height | 12.01 in |
| Temperature | + 14 / + 140 °F |
| Standard | EN 12532 |
| Weight | 12.747 lbs |
| Swivel Radius | 7.38 in |
| Hardness of tread | Shore A 92 |
| Load capacity (dynamic) | 2205 lbs |
| Load capacity (static) | 4410 lbs |

Dimensions



Structure & Mounting



Advantages at a glance

| | |
|----------------------|-----------|
| Roll performance | ● ● ● ● ○ |
| Movement noise | ● ● ● ○ ○ |
| Attrition | ● ● ● ● ○ |
| Corrosion resistance | ● ● ● ○ ○ |

KAPPA

9650ITP250P63 Flat

EAN 4031582314335



BETTER MOBILITY. BETTER LIFE.

Structure & Mounting

