

# KAPPA

9650FTP300P63

EAN 4031582314274

Swivel caster, housing and plate steel-welded, bright zinc plated, blue passivated, sealed swivel bearing with dual purpose bearing and tapered roller bearing, threaded king pin and locking nut secured, grease nipple, wheel axle with nut, plate fitting. Wheel center made of cast iron, Tread: Polyurethane, casted, precision ball bearing



BETTER MOBILITY. BETTER LIFE.

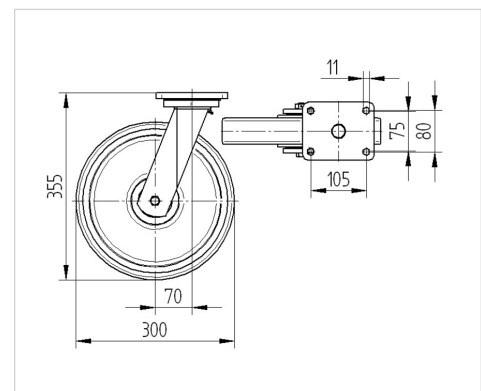


Picture may differ from original product

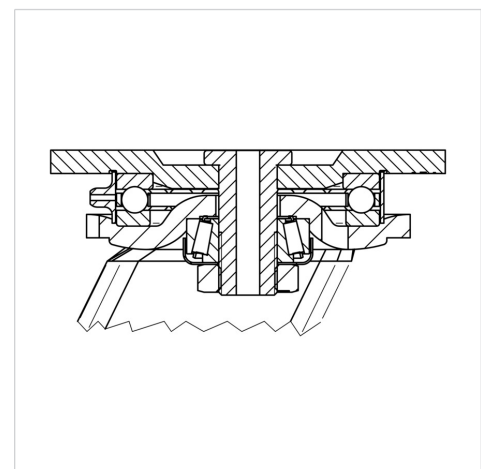
## Technical Data

Wheel diameter	11.81 in
Wheel width	1.97 in
Caster width	4.33 in
Plate size	5.31 x 4.33 in
Plate hole centers	4.13 x 3.15/2.95 in
Plate hole	0.43 in
Dome-Ø	4.37 in
Offset	2.76 in
Swivel Interference	17.52 in
Overall height	13.98 in
Temperature	+ 14 / + 140 °F
Standard	EN 12533
Weight	32.615 lbs
Swivel Radius	8.76 in
Hardness of tread	Shore A 92
Load capacity (dynamic)	2645 lbs
Load capacity (static)	5290 lbs

## Dimensions



## Structure & Mounting



## Advantages at a glance

Roll performance	● ● ● ● ○
Movement noise	● ● ● ○ ○
Attrition	● ● ● ● ○
Corrosion resistance	● ● ● ○ ○

# KAPPA

9650FTP300P63

EAN 4031582314274



BETTER MOBILITY. BETTER LIFE.

## Structure & Mounting

