

INTEGRAL

2044UAP150R26-28S45 4xM8

EAN 4031582300185

Swivel Caster with central, total or directional lock, Frame made of pressed steel, precision ball bearing in swivel head and wheel, housing cover made of synthetic plastic, stem with cam hole for profile bars. Wheel center made of Polyamide, Tread: Polyurethane, precision ball bearing
Hint: TÜV Süd certified product.



BETTER MOBILITY. BETTER LIFE.

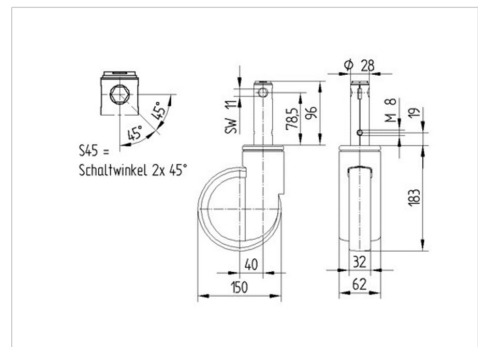


Picture may differ from original product

Technical Data

Wheel diameter	5.91 in
Wheel width	1.26 in
Caster width	2.44 in
Bolt-Ø	1.10 in
Bolt length	3.78 in
Dome-Ø	2.44 in
Offset	1.57 in
Swivel Interference	9.06 in
Overall height	7.20 in
Temperature	- 13 / - 13 °F
Standard	EN 12531
Weight	2.183 lbs
Swivel Radius	4.53 in
Hardness of tread	Shore D 42
Load capacity (dynamic)	330 lbs
Load capacity (static)	990 lbs

Dimensions



Advantages at a glance

Roll performance	● ● ● ● ●
Movement noise	● ● ● ● ●
Attrition	● ● ● ● ●
Corrosion resistance	● ● ● ● ●

INTEGRAL

2044UAP150R26-28S45 4xM8

EAN 4031582300185



BETTER MOBILITY. BETTER LIFE.

Structure & Mounting

