

# LINEA

5947UAP100P30-11 RAL9002

EAN 4031582368673

Swivel caster with total lock, trailing end of caster, housing made of Polyamide, precision ball bearing in swivel head, bolt hole. Wheel center made of Polyamide, Tread: Polyurethane, precision ball bearing



BETTER MOBILITY. BETTER LIFE.

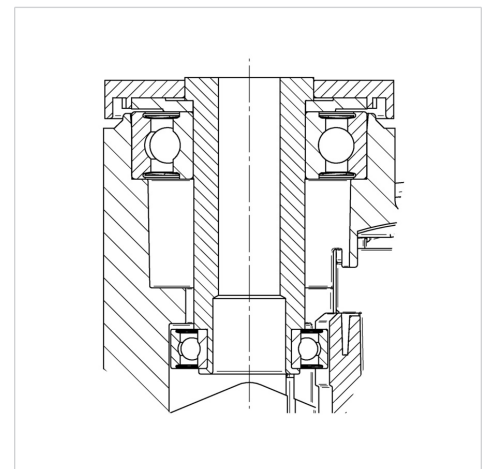


Picture may differ from original product

## Technical Data

Wheel diameter	3.94 in
Wheel width	0.79 in
Caster width	3.23 in
Center hole	0.43 in
Dome-Ø	2.05 in
Offset	1.26 in
Swivel Interference	8.50 in
Overall height	4.65 in
Temperature	- 14 / + 104 °F
Standard	EN 12530
Weight	1.556 lbs
Swivel Radius	4.25 in
Hardness of tread	Shore A 92
Load capacity (dynamic)	220 lbs
Load capacity (static)	440 lbs

## Structure & Mounting



## Advantages at a glance

Roll performance	● ● ● ● ●
Movement noise	● ● ● ○ ○
Attrition	● ● ● ● ○
Corrosion resistance	● ● ● ● ○