

AGILA

7470PJC125P51

EAN 4031582350302

Swivel caster, housing made of Stainless Steel, double ball bearing swivel head, wheel axle with nut, plate fitting. Wheel center made of Polypropylene, Tread: TENTEprene (thermoplastic rubber), grey non-marking, with threadguards, precision ball bearing, stainless



BETTER MOBILITY. BETTER LIFE.

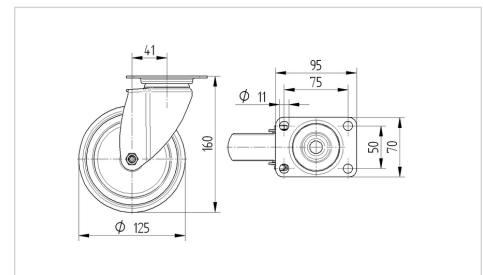


Picture may differ from original product

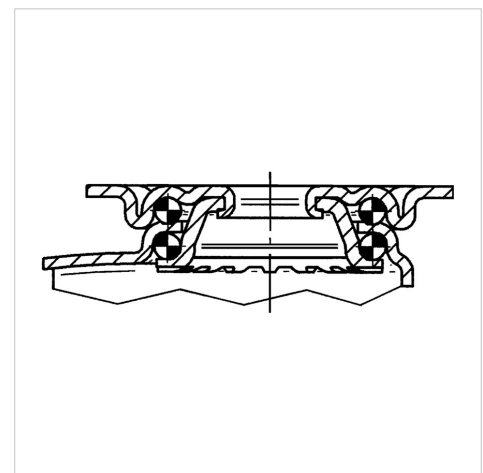
Technical Data

Wheel diameter	4.92 in
Wheel width	1.26 in
Caster width	2.36 in
Plate size	3.74 x 2.76 in
Plate hole centers	2.95 x 1.97 in
Plate hole	0.43 in
Dome-Ø	2.36 in
Offset	1.61 in
Swivel Interference	8.15 in
Overall height	6.30 in
Temperature	- 4 / + 140 °F
Standard	EN 12530
Weight	1.649 lbs
Swivel Radius	4.07 in
Hardness of tread	Shore A 87
Load capacity (dynamic)	220 lbs
Load capacity (static)	440 lbs

Dimensions



Structure & Mounting



Advantages at a glance

Roll performance	● ● ● ○ ○
Movement noise	● ● ● ○ ○
Attrition	● ● ● ○ ○
Corrosion resistance	● ● ● ● ●

AGILA

7470PJC125P51

EAN 4031582350302



BETTER MOBILITY. BETTER LIFE.

Structure & Mounting

