

# KAPPA

## 9680ITP160P63 Flat

EAN 4031582315202

Swivel caster, housing and plate steel-welded, bright zinc plated, blue passivated, sealed single swivel double ball bearing, threaded king pin and locking nut secured, grease nipple, wheel axle with nut, plate fitting. Wheel center made of Aluminum, Tread: Polyurethane, casted, precision ball bearing



BETTER MOBILITY. BETTER LIFE.

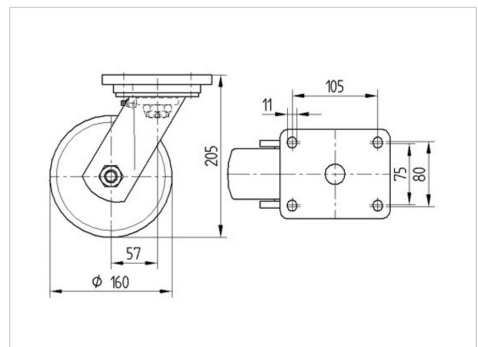


Picture may differ from original product

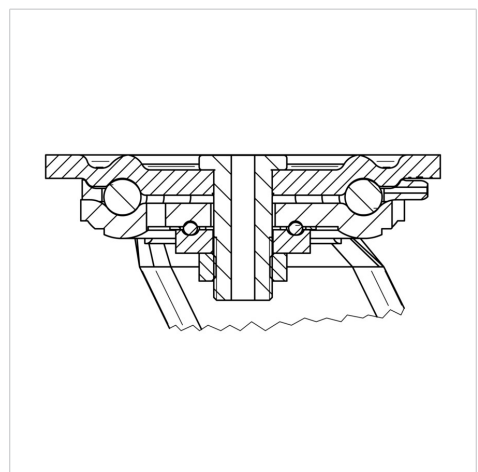
### Technical Data

Wheel diameter	6.3 in
Wheel width	1.97 in
Caster width	4.33 in
Plate size	5.31 x 4.33 in
Plate hole centers	4.13 x 3.15/2.95 in
Plate hole	0.43 in
Dome-Ø	4.37 in
Offset	2.28 in
Swivel Interference	11.02 in
Overall height	8.07 in
Temperature	+ 14 / + 140 °F
Standard	EN 12532
Weight	8.909 lbs
Swivel Radius	5.51 in
Hardness of tread	Shore A 92
Load capacity (dynamic)	1765 lbs
Load capacity (static)	3525 lbs

### Dimensions



### Structure & Mounting



### Advantages at a glance

Roll performance	● ● ● ○ ○
Movement noise	● ● ● ○ ○
Attrition	● ● ● ● ○
Corrosion resistance	● ● ● ○ ○

# KAPPA

## 9680ITP160P63 Flat

EAN 4031582315202



BETTER MOBILITY. BETTER LIFE.

### Structure & Mounting

