

LINEA

5944UAP150R36-32S30 CC R9002

EAN 4031582382686

Swivel Caster with central, total or directional lock, housing made of Polyamide, precision ball bearing in swivel head, stem with cam hole for profile bars, short version. Wheel center made of Polyamide, Tread: Polyurethane, precision ball bearing Housing with integrated cable catcher made of Polyethylene.



BETTER MOBILITY. BETTER LIFE.



Picture may differ from original product

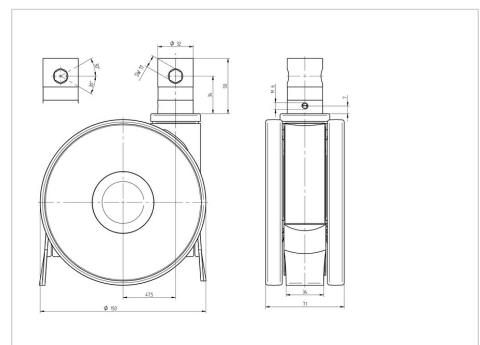
Technical Data

Wheel diameter	5.91 in
Wheel width	0.59 in
Caster width	2.80 in
Bolt-Ø	1.26 in
Bolt length	1.97 in
Offset	1.87 in
Swivel Interference	9.65 in
Overall height	6.10 in
Temperature	- 14 / + 104 °F
Standard	EN 12531 (load capacity)
Weight	2.447 lbs
Swivel Radius	4.82 in
Load capacity (dynamic)	330 lbs
Load capacity (static)	990 lbs

Advantages at a glance

Roll performance	● ● ● ● ●
Movement noise	● ● ● ○ ○
Attrition	● ● ● ● ○
Corrosion resistance	● ● ● ● ○

Dimensions



Structure & Mounting

