

# E-DRIVE FLEX

EDFZ112

EAN 4031582417074

E-Drive flex control unit, 24V single control for coupling to the drive unit  
E-Drive flex, without battery cable



BETTER MOBILITY. BETTER LIFE.

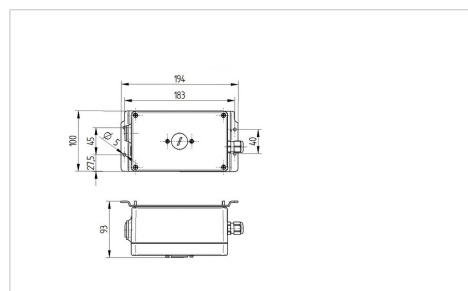


Picture may differ from original product

## Technical Data

Required power supply	24 V DC
Cable routing	flexible to the components, Plug & Play
Cable length	1 m to drive unit
Updates	USB interface for firmware and parameter updates
Assembly	individual assembly through integrated mounting plate
Dimensions	see drawing
Weight	1.5 kg
Current consumption	16 A
Reverse polarity protection	integrated in connections
Protection class	IP X4 (splash water from all sides, all plugs connected)
Permissible operating temperature	operating temperature 5 to 50° C (recommend 15 to 50° C) , atmospheric humidity 90%, non-condensing
Permitted storage temperatures	- 20 to 45° C

## Dimensions



## Advantages at a glance

Roll performance	○ ○ ○ ○ ○
Movement noise	○ ○ ○ ○ ○
Attrition	○ ○ ○ ○ ○
Corrosion resistance	○ ○ ○ ○ ○